



Quick guide

ReSound LiNX 3D™
ITC/HS/FS

GN Making Life Sound Better

My hearing aid information

Product: ReSound LiNX 3D

Model: ITC/HS/FS

Serial number (R):

Serial number (L):

Battery size: 312, 13

Program button (A):

ACTION	RESULT
SHORT push	Program change
LONG push	Activate streaming (if enabled by professional)

Volume control (C):

(if set up by your hearing care professional)

ACTION	RESULT
Rotate forward (toward your face)	Volume increases
Rotate backward (away from your face)	Volume decreases

Programs:

(if set up by your hearing care professional)

PROGRAM	WHEN TO USE	BEEPS
1		1
2		2
3		3
4		4

Get to know your hearing aid

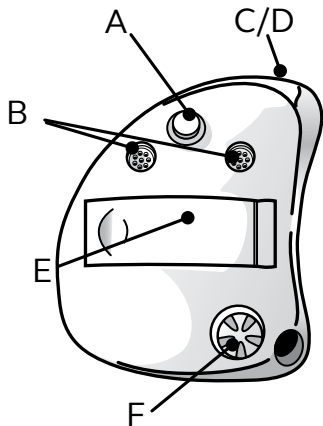
A. Program button*

B. Microphones

C. Wax guard

D. Sound outlet

E. Battery door

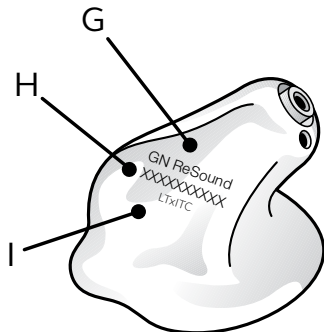


F. Volume control*

G. Manufacturer

H. Model

I. Serial number



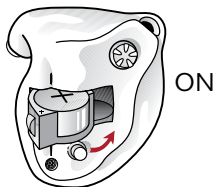
*If selected by your hearing care professional

View ReSound hearing aid tutorial videos at youtube.com/resoundus.

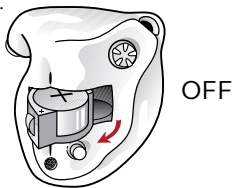
What you need to know

Getting started: On/Off function

ON: When the battery door (E) is closed, the hearing instrument turns on, and the default program will be activated.



OFF: To turn off the hearing instrument, open the battery door (E). Many individuals can use their fingernail to pull it open.



Inserting/Replacing the battery:

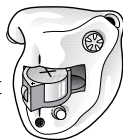
1. Open the battery door (E) completely by using your fingertip.



2. Remove protective sticker from battery and wait 2 minutes before inserting the battery into the hearing aid to allow full activation of the battery.



3. Insert the new battery with the positive side (flat side) in the correct position, as shown.

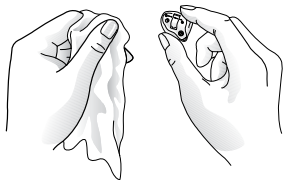


4. Gently close the battery door. If it doesn't close easily, check to see if the battery is upside down.

Regular care & maintenance

Daily: Clean your hearing aid.

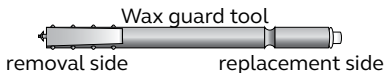
Keep your hearing aids dry. Clean the hearing aids using a soft cloth or tissue.



Monthly: Change the wax guard (C) or see your hearing care professional.

For changing CeruSTOP™ (white) wax guard, complete the following steps:

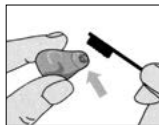
Removal: Insert the removal side of the wax guard tool into the used wax guard (C) so that the shaft of the tool is touching the rim of the wax guard. Slowly pull the wax guard straight out.



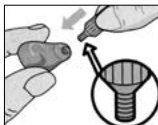
Insertion: To insert the new wax guard (C), gently press the replacement side of the wax guard tool straight into the hole of the sound outlet until the outer ring lies flush with the outside of the receiver. Pull the tool straight out. The new wax guard will remain in place.

For changing HF3 wax guard (C), complete the following steps:

1. Brush the sound outlet area with the sound outlet pointed down.



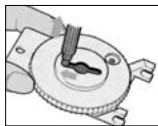
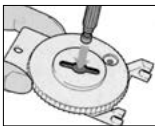
2. Insert the threaded end of the wax guard tool into the used wax guard (C), and rotate clockwise.



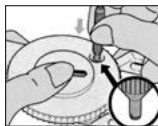
3. Gently pull until the used guard is removed.



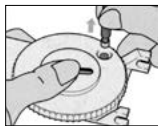
4. Discard the used guard in the slot located in the wax guard kit by pressing it into the center, sliding it to one end of the slot, and pull until the filter is discarded.



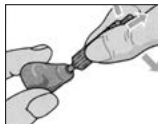
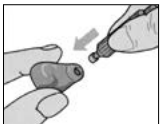
5. Flip the wax guard tool around, locate a new guard in the dial, and press the tip of the tool into the center of the dial.



6. Gently pull the new guard out of the dial.



7. Press the new guard to the canal tip of the hearing aid. Move the tool gently side to side and pull it away from the hearing aid.



Flight mode:

Some airlines prohibit the use of wireless hearing aids (RF transmitters) onboard. If required by your airline, enable flight mode:

Disable wireless operation by opening and closing the battery compartment three times within ten seconds (open-close, open-close, open-close). Your instruments will now be in flight mode.

The hearing aids must function in flight mode for 10 seconds before wireless operation can be re-enabled.

To re-enable wireless operation, open and close the battery door one time and wait thirty seconds before opening the battery door again to avoid accidentally entering flight mode again.

Beep/tone indicators

BEEP/TONE	INDICATION	ACTION REQUIRED
Ding, ding, ding, dong	Low battery	Change battery
Ding (5 or 10)	Hearing aid is starting up	After dings cease, hearing aid is turned on
Ding-ding, ding-ding, etc.	Hearing aid is in flight mode	Use in flight mode if desired, or open-close battery door (E) to exit flight mode
Ripple tone	Hearing aid is in streaming mode	Use with wireless accessory or press multi-function button to exit streaming mode

View ReSound hearing aid tutorial videos at youtube.com/resoundus.

Troubleshooting

SYMPTOM	CAUSE	POSSIBLE REMEDY
No sound	Battery door (E) not closed	Turn on by closing the battery door (E)
	Dead battery	Replace battery
	Battery door (E) will not close	Insert battery properly
	Blocked wax guard (C)	Replace wax guard (C) or consult your hearing care professional
Not loud enough	Blocked sound outlet (D)	Change wax guard (C) or consult your hearing professional
	Change in hearing, volume too low	Consult your hearing care professional
	Excessive ear wax	Consult your hearing care professional
Excessive whistling/feedback	Incorrect placement in ear	Re-insert hearing aid carefully
	Excessive ear wax	Clean guard (C)/consult your hearing care professional
	If none of the above	Consult your hearing care professional

If there are any other problems not mentioned in this guide, please contact ReSound or your hearing care professional.

For more information

Refer to the user guide included in your hearing aid box.

Your hearing care professional can be reached at:

View ReSound hearing aid tutorial videos at youtube.com/resoundus.

Manufacturer according to FDA:

ReSound North America

8001 E. Bloomington Freeway
Bloomington, MN 55420
1.888.735.4327
resound.com

Manufacturer according to Health Canada:

ReSound Canada

303 Supertest Road
Toronto, Ontario M3J 2M4
1.888.737.6863
resound.com

ReSound Government Services

8001 E. Bloomington Freeway
Bloomington, MN 55420
1.800.392.9932
www.resound.com/veterans



400704011

400704011 Rev A 2017.02