



## Quick guide

ReSound LiNX 3D™ IIC

**GN** Making Life Sound Better

# My hearing aid information

**Product:** ReSound LiNX 3D

**Model:** IIC

**Serial number (R):**

---

**Serial number (L):**

---

**Battery size:** 10A

## Get to know your hearing aid

A. Microphone

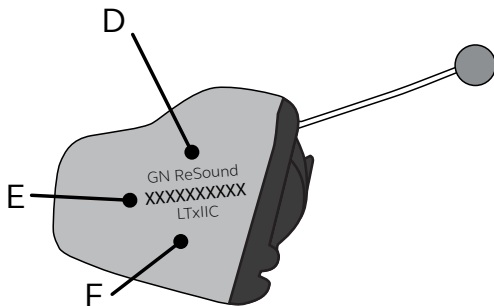
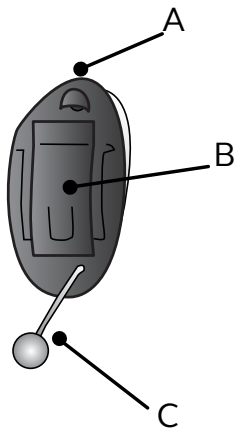
B. Battery door

C. Retrieval line

D. Manufacturer

E. Serial number

F. Model



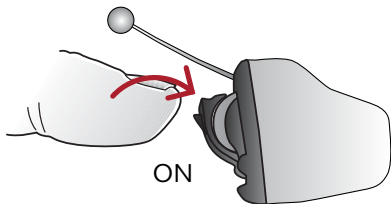
View ReSound care and maintenance videos at  
<http://www.youtube.com/user/resoundus>

## What you need to know

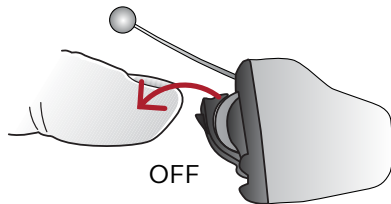
**Getting started:** On/Off function

**ON:** Insert battery & completely close battery door (B).

Program 1 will be active.

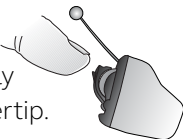


**OFF:** Open the battery door (B). Use fingertip to pull it all the way.



## Inserting/Replacing the battery:

1. Open the battery door (B) completely by using your fingertip.



2. Remove protective sticker from battery and wait 2 minutes before inserting the battery into the hearing aid to allow full activation of the battery.



3. Insert the new battery with the positive side (flat side) in the correct position facing out.



4. Gently close the battery door. If it doesn't close easily, check to see if the battery is upside down.

## Troubleshooting

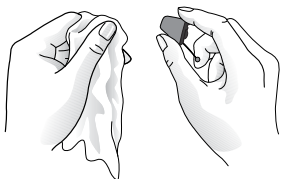
<b>SYMPTOM</b>	<b>CAUSE</b>	<b>POSSIBLE REMEDY</b>
No sound	Battery door not closed	Turn on by closing the battery door (B)
	Dead battery	Replace battery
	Battery door will not close	Insert battery properly
	Blocked wax filter	Replace wax filter or consult your hearing care professional
Not loud enough	Blocked sound outlet	Change wax guard or consult your hearing professional
	Change in hearing, volume too low	Consult your hearing care professional
	Excessive ear wax	Consult your hearing care professional
Excessive whistling/feedback	Incorrect placement in ear	Re-insert hearing aid carefully
	Excessive ear wax	Clean guard/consult your hearing care professional
	If none of the above	Consult your hearing care professional

If there are any other problems not mentioned in this guide, please contact ReSound or your hearing care professional.

## Regular care & maintenance

**Daily:** Clean your hearing aid.

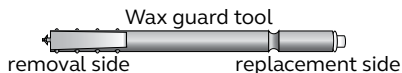
Keep your hearing aids dry. Clean the hearing aids using a soft cloth or tissue.



**Monthly:** Change the wax guard or see your hearing care professional.

For changing CeruSTOP™ (white) wax filters, complete the following steps:

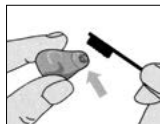
**Removal:** Insert the removal side of the wax guard tool into the used wax guard so that the shaft of the tool is touching the rim of the wax guard. Slowly pull the wax guard straight out.



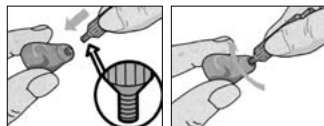
**Insertion:** To insert the new wax guard, gently press the replacement side of the wax guard tool straight into the hole of the sound outlet until the outer ring lies flush with the outside of the receiver. Pull the tool straight out. The new wax guard will remain in place.

**For changing HF3 wax filters, complete the following steps:**

1. Brush the sound outlet area with the sound outlet pointed down.



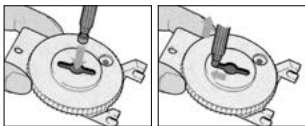
2. Insert the threaded end of the wax filter tool into the used wax filter, and rotate clockwise.



3. Gently pull until the used filter is removed.

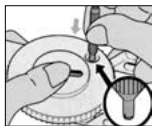


4. Discard the used filter in the slot located

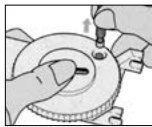


in the wax filter kit by pressing it into the center, sliding it to one end of the slot, and pull until the filter is discarded.

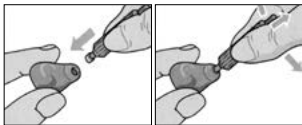
5. Flip the wax filter tool around, locate a new filter in the dial, and press the tip of the tool into the center of the dial.



6. Gently pull the new filter out of the dial.



7. Press the new filter to the canal tip of the hearing aid. Move the tool gently side to side and pull it away from the hearing aid.



## For more information

**Refer to the user guide included in your hearing aid box.**

**Your hearing care professional can be reached at:**

---

---

---

---

View ReSound hearing aid tutorial videos at [youtube.com/resoundus](https://youtube.com/resoundus).

**Manufacturer according to FDA:**

**ReSound North America**

8001 E. Bloomington Freeway  
Bloomington, MN 55420  
1.888.735.4327  
[resound.com](https://resound.com)

**Manufacturer according to Health Canada:**

**ReSound Canada**

303 Supertest Road  
Toronto, Ontario M3J 2M4  
1.888.737.6863  
[resound.com](https://resound.com)

**ReSound Government Services**

8001 E. Bloomington Freeway  
Bloomington, MN 55420  
1.800.392.9932  
[www.resound.com/veterans](https://www.resound.com/veterans)

