



WIRELESS CONNECTIVITY

resound.com

ReSound Multi Mic Quick guide

– GETTING STARTED



B STATUS LIGHT

- Will blink green every other second when the Multi Mic is turned on and charged.
- Will blink orange every second when there is less than 30 minutes battery left.

C VOLUME CONTROL

Use the volume buttons on the side of the Multi Mic to adjust the volume. Press '+' to increase volume and '-' to decrease volume. (Mute/Volume light **E** will blink each time volume is adjusted)

D MUTE

To mute the Multi Mic press the mute button. Now the mute/volume status light **E** will blink orange every second. To unmute press mute button again, mute/volume light will stop blinking.



SWITCHING MODE:

Modes:

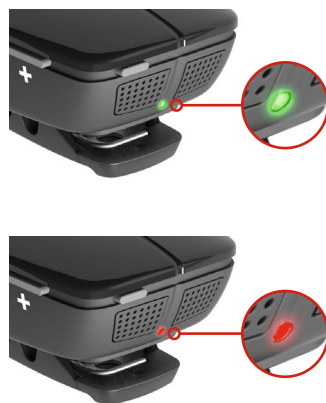
- Microphone
- T-coil
- Line in
- FM (audio system)

1. Push the mode button on the back of the Multi Mic. The mode light next to the current mode will light up green.
 2. Push mode button again within 3 seconds to switch mode.
- When connecting either a mini-jack cable or an FM receiver to the Multi Mic, the corresponding mode will automatically be selected if the unit is turned on. These modes (Line-in and FM) can only be selected if either a mini-jack cable or an FM receiver is connected to them.
 - You can switch out of these modes even when the FM or line in are connected by pressing mode button until the desired mode is reached.

GETTING STARTED

(Charge the Multi Mic before use)

1. Turn on the Multi Mic: Push and **hold** the power button **A** on the top of the Multi Mic until status light **B** blinks green.
2. **Connect your hearing aids** to the Multi Mic: Push and **hold** the program button/toggle button **on your hearing aids** until you hear a melody. Check the connection by blowing or tapping on the Multi Mic. This sound should be audible in your hearing aids. If this is not the case, see the troubleshooting guide on the reverse page.
3. To exit the Multi Mic streaming program: Push the program button/toggle button on your hearing aids. You hearing aids will return to the most recent hearing aid program indicated by one or more beeps.
4. Turn off the Multi Mic: Push and **hold** the power button until the status light turns red and then off.



F CHARGING

- Insert the charger in the micro USB plug on the side of Multi Mic to charge.
- Status light indications when charging:



Power/Charging	Charging	Fully charged
Powered Off		
Powered On		

Mode button



Modes and Mode light

TO PAIR YOUR HEARING AIDS AND MULTI MIC

(Your dispenser will usually do this for you)

- 1. Push the power button on the Multi Mic and hold until status light turns green. The Multi Mic is now turned on.
- 2. Find the pairing button placed below the pairing icon (📶) on the back side of the Multi Mic. If you cannot find this icon, try rotating the clip.
- 3. Push the pairing button (use a pen or similar). The status light will now blink orange.
- 4. Open and close the battery doors on the hearing aids. This must be done within 20 seconds of pushing the pairing button.

A successful pairing will be indicated by a melody playing in the hearing aids and the status light will stop blinking and be solid orange for 2 seconds before resuming blinking.



Note: Remember that the hearing aids need to be switched into the Multi Mic streaming program to listen to the Multi Mic

TROUBLESHOOTING GUIDE – NO CONNECTION

- 1. **Check status light.** It should blink green every 2 seconds. If it is not blinking try pushing and holding the power button until you see a green light. If the status light turns red and off the Multi Mic needs to be charged. If the power status light blinks orange this indicates that the Multi Mic needs to be charged.
- 2. **Check Mute/Volume light,** if it is blinking orange this indicates that the Multi Mic is muted. No sound is being sent to the hearing aids. Push the mute button to unmute.
- 3. **Check hearing aid battery status:** Change the battery in your hearing aids. Hearing aids sometimes need new batteries to receive a streamed signal even if they are fine for normal hearing aid use.
- 4. **If Multiple Streaming Devices are connected:** If you have a TV streamer or more than one Multi Mic
 - Try pushing the hearing aid program button/toggle button and **holding** until you hear a melody
 - Repeat this step (two long presses) (Multi Mic can be placed in ‘channel’ 1, 2 or 3.)
- 5. **Re-pair the Multi Mic to the hearing aids:** Directions how to pair your hearing aids and the Multi Mic can be found above.

The Multi Mic sends speech directly to your hearing aids. It can be clipped to the desired talker’s clothes, hung on a lanyard or be placed on the table.

Speech understanding is easier when using the Multi Mic because the microphone is closer to the speaker’s mouth than your hearing aids are.

A diagram illustrating the use of the Multi Mic. On the right, a grey silhouette of a person stands with a small icon of the Multi Mic clipped to their shirt. A dotted line with a microphone icon at the end points from the Multi Mic to the mouth of a person sitting at a table. Two other people are seated at the table, one in a red silhouette and one in a grey silhouette. The background is split into a dark grey left half and a light grey right half.

For further instructions, please refer to the full user guide provided with your Multi Mic

ReSound North America
8001 Bloomington Freeway
Bloomington, MN 55420
1-888-735-4327
resound.com

ReSound Canada
303 Supertest Road
Toronto, Ontario M3J 2M4
1-888-737-6863
resound.com

ReSound Government Services
8001 Bloomington Freeway
Bloomington, MN 55420
1-800-392-9932
resound.com/veterans