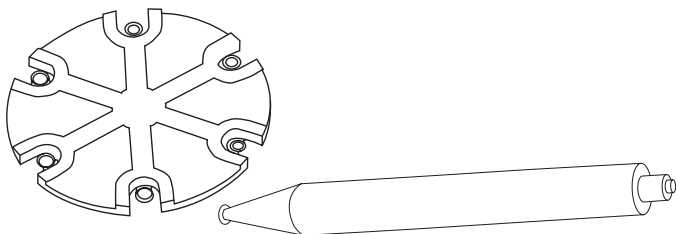
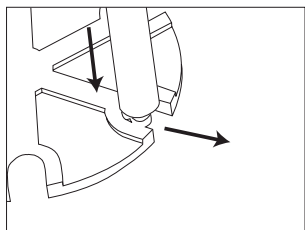


MPS - Microphone Protection System

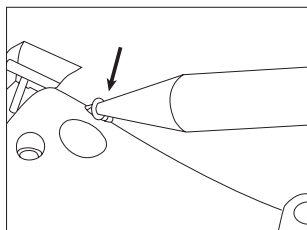


1



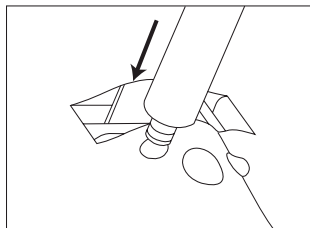
Insert Tool into MPS and pull MPS off the disk.

2



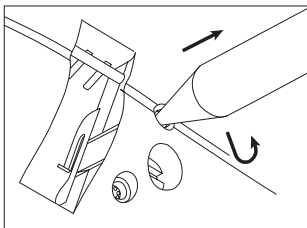
Position MPS tool as shown and push the mushroom head of removal end of the tool down into mps cavity.

3



Insert MPS into microphone holes on faceplate

4



Keep pushing MPS tool down while rotating it in to vertical position, then pull MPS straight out.